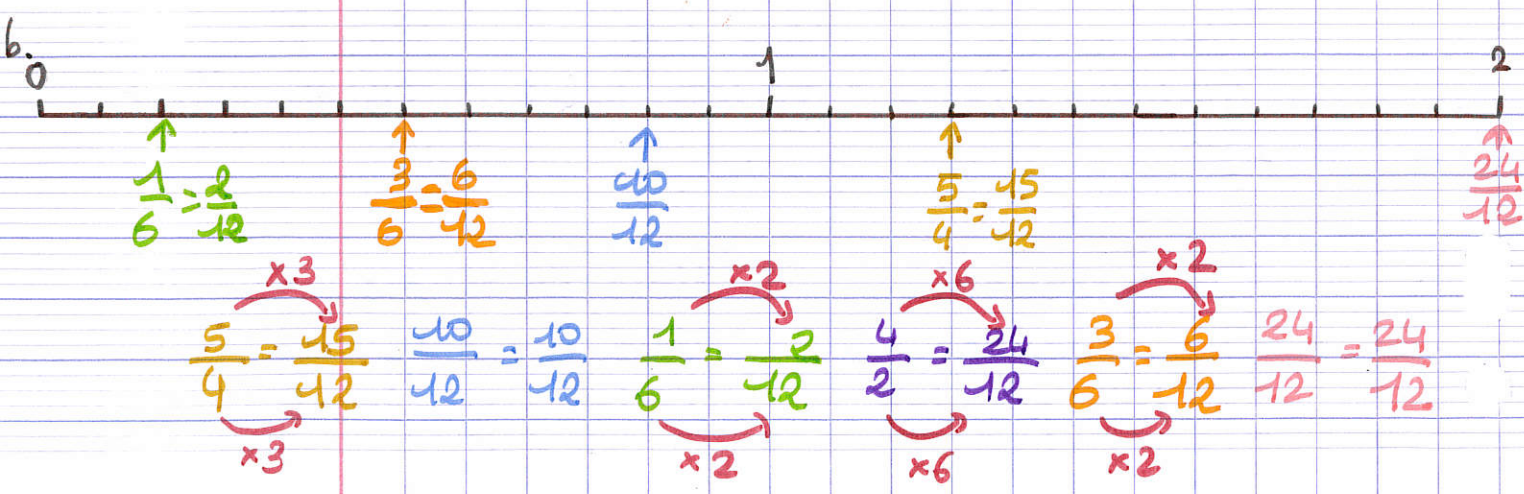
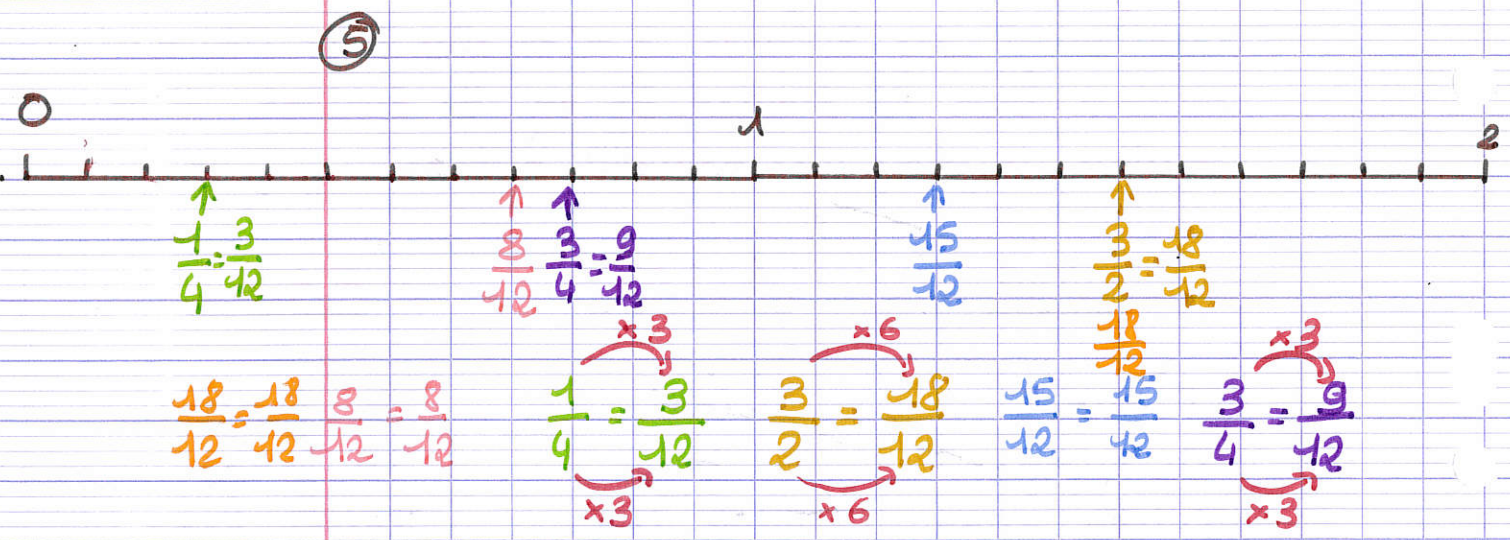
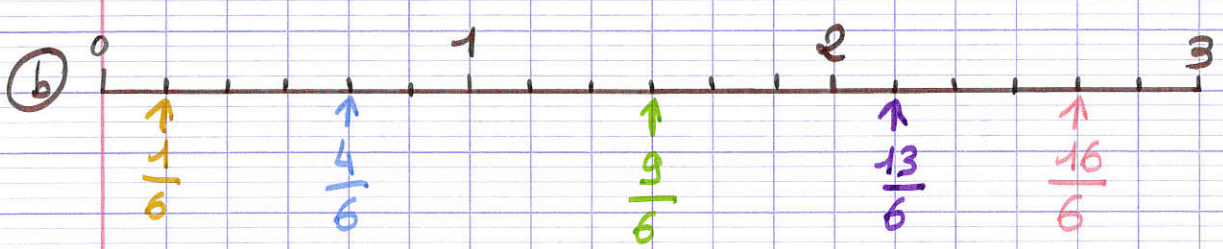
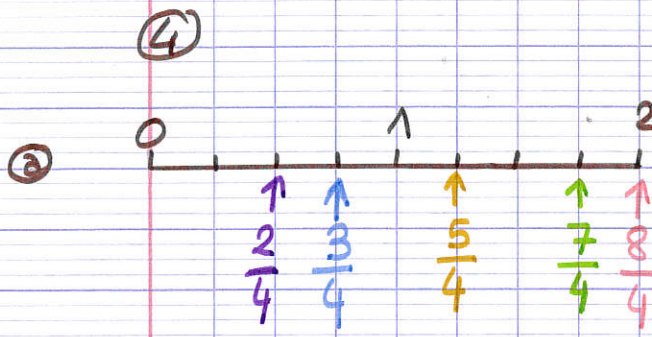


16.06

MATHEMATIQUES



16.06

(10)

1 h = 60 min $\frac{3}{4}$ h = 45 minutes

$$\begin{array}{r} \overline{60} \overline{) 4} \\ -4 \downarrow 15 \\ \hline 20 \\ -20 \\ \hline 0 \end{array}$$

$\frac{1}{4}$ h = 15 minutes

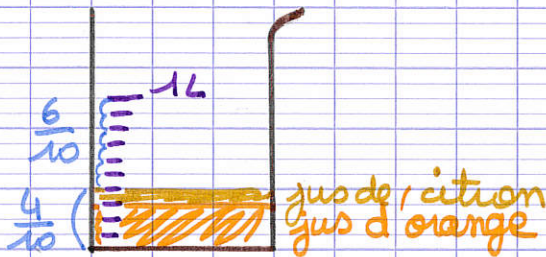
$15 \times 3 = 45$ minutes

$\frac{1}{2}$ h = 30 minutes

$$\begin{array}{r} \overline{60} \overline{) 2} \\ -60 \overline{) 30} \\ \hline 0 \end{array}$$

$\frac{1}{4}$ h = 15 minutes

(11)



$$\frac{1}{10} + \frac{3}{10} = \frac{4}{10}$$

$$\frac{10}{10} - \frac{4}{10} = \frac{6}{10}$$

Il faut ajouter $\frac{6}{10}$ l d'eau.