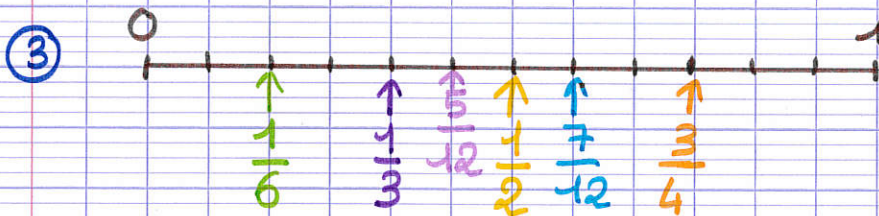
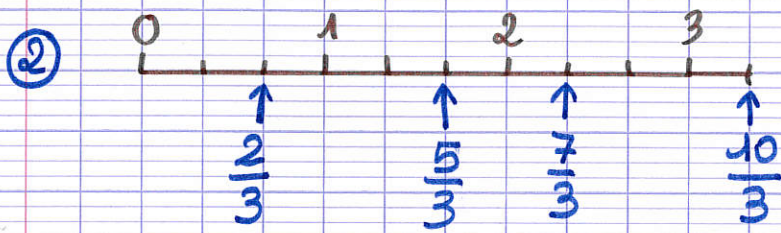
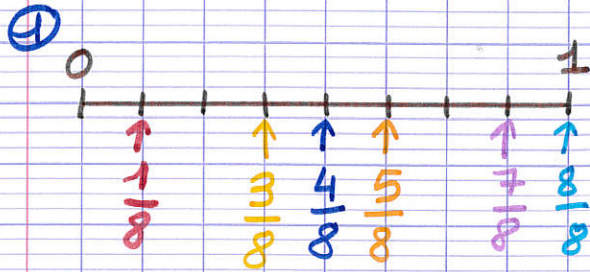


11/06

MATHÉMATHILDE



$$\frac{5}{12} = \frac{5}{12}$$

$$\frac{1}{6} = \frac{2}{12}$$

(Multiplication factors: x2 for numerator, x2 for denominator)

$$\frac{1}{2} = \frac{6}{12}$$

(Multiplication factors: x6 for numerator, x6 for denominator)

$$\frac{1}{3} = \frac{4}{12}$$

(Multiplication factors: x4 for numerator, x4 for denominator)

$$\frac{7}{12} = \frac{7}{12}$$

$$\frac{3}{4} = \frac{9}{12}$$

(Multiplication factors: x3 for numerator, x3 for denominator)