

1 Effectue ces additions.

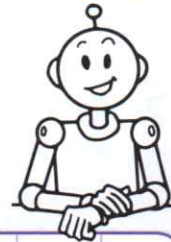
	4	3	,	5	2
+		8	,	4	3

	2	0	1	,	7	1
+		3	2	,	8	5

2 Pose ces additions et calcule.

$$23,65 + 3,89$$

$$86,23 + 96,5$$



3 Calcule à l'aide de ta calculatrice.

$$56,23 + 63,5 + 1,56 = \underline{\hspace{2cm}}$$

$$89,63 + 100,2 = \underline{\hspace{2cm}}$$

$$583,99 + 0,55 + 3,84 = \underline{\hspace{2cm}}$$

$$34,212 + 8,569 = \underline{\hspace{2cm}}$$

$$123,57 + 10,55 + 96,32 = \underline{\hspace{2cm}}$$

