

1 Pose ces soustractions et calcule.

$8\ 634 - 1\ 965 =$

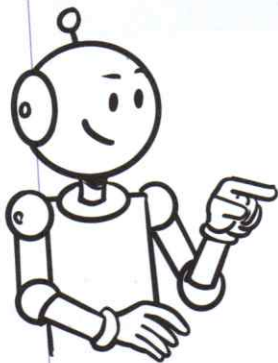


$6\ 032 - 854 =$

$7\ 426 - 648 =$

$21\ 632 - 5\ 941 =$

2 Effectue ces soustractions.



4	2	6	
-	3	5	2
.	.	.	

8	0	2	
-	6	3	2
.	.	.	

5	9	7
-	9	8
.	.	.

8	6	2	
-	6	8	7
.	.	.	

5	0	8	
-	1	9	7
.	.	.	

9	5	4	
-	4	8	5
.	.	.	