

Copyright © 2015. [www.englishworksheets.com](http://www.englishworksheets.com) All rights reserved.

**a shirt**



Copyright © 2015. [www.englishworksheets.com](http://www.englishworksheets.com) All rights reserved.

**jeans**



Copyright © 2015. [www.englishworksheets.com](http://www.englishworksheets.com) All rights reserved.

**a t-shirt**



Copyright © 2015. [www.englishworksheets.com](http://www.englishworksheets.com) All rights reserved.

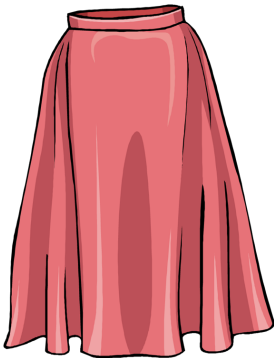
**shorts**

**NOTE :** Cut the cards following the lines and dots. Glue and fold over the two halves to have a solid word card. You can also have them laminated for long term use.



Copyright © 2015. [www.englishworksheets.com](http://www.englishworksheets.com) All rights reserved.

**a dress**



Copyright © 2015. [www.englishworksheets.com](http://www.englishworksheets.com) All rights reserved.

**a skirt**



Copyright © 2015. [www.englishworksheets.com](http://www.englishworksheets.com) All rights reserved.

**a blouse**



Copyright © 2015. [www.englishworksheets.com](http://www.englishworksheets.com) All rights reserved.

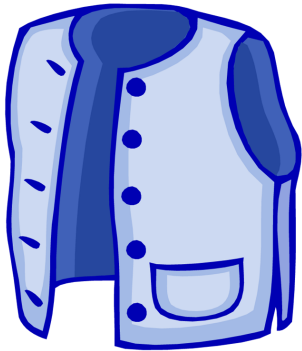
**a suit**

**NOTE :** Cut the cards following the lines and dots. Glue and fold over the two halves to have a solid word card. You can also have them laminated for long term use.



Copyright © 2015. [www.englishworksheets.com](http://www.englishworksheets.com) All rights reserved.

**a jacket**



Copyright © 2015. [www.englishworksheets.com](http://www.englishworksheets.com) All rights reserved.

**a waistcoat**



Copyright © 2015. [www.englishworksheets.com](http://www.englishworksheets.com) All rights reserved.

**a cardigan**



Copyright © 2015. [www.englishworksheets.com](http://www.englishworksheets.com) All rights reserved.

**a sweater**

**NOTE :** Cut the cards following the lines and dots. Glue and fold over the two halves to have a solid word card. You can also have them laminated for long term use.



Copyright © 2015. [www.englishworksheets.com](http://www.englishworksheets.com) All rights reserved.

**a coat**



Copyright © 2015. [www.englishworksheets.com](http://www.englishworksheets.com) All rights reserved.

**trousers**



Copyright © 2015. [www.englishworksheets.com](http://www.englishworksheets.com) All rights reserved.

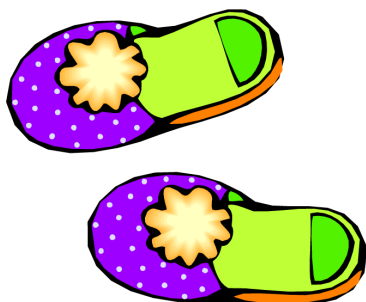
**pyjamas**



Copyright © 2015. [www.englishworksheets.com](http://www.englishworksheets.com) All rights reserved.

**a scarf**

**NOTE :** Cut the cards following the lines and dots. Glue and fold over the two halves to have a solid word card. You can also have them laminated for long term use.



Copyright © 2015. [www.englishworksheets.com](http://www.englishworksheets.com) All rights reserved.

**slippers**



Copyright © 2015. [www.englishworksheets.com](http://www.englishworksheets.com) All rights reserved.

**high heels**



Copyright © 2015. [www.englishworksheets.com](http://www.englishworksheets.com) All rights reserved.

**sandals**



Copyright © 2015. [www.englishworksheets.com](http://www.englishworksheets.com) All rights reserved.

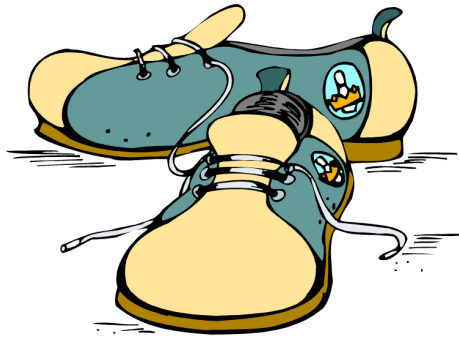
**trainers**

**NOTE :** Cut the cards following the lines and dots. Glue and fold over the two halves to have a solid word card. You can also have them laminated for long term use.



Copyright © 2015. [www.englishworksheets.com](http://www.englishworksheets.com) All rights reserved.

**boots**



Copyright © 2015. [www.englishworksheets.com](http://www.englishworksheets.com) All rights reserved.

**shoes**



Copyright © 2015. [www.englishworksheets.com](http://www.englishworksheets.com) All rights reserved.

**a hat**



Copyright © 2015. [www.englishworksheets.com](http://www.englishworksheets.com) All rights reserved.

**glasses**

**NOTE :** Cut the cards following the lines and dots. Glue and fold over the two halves to have a solid word card. You can also have them laminated for long term use.



Copyright © 2015. [www.englishworksheets.com](http://www.englishworksheets.com) All rights reserved.

**sunglasses**



Copyright © 2015. [www.englishworksheets.com](http://www.englishworksheets.com) All rights reserved.

**a belt**



Copyright © 2015. [www.englishworksheets.com](http://www.englishworksheets.com) All rights reserved.

**socks**



Copyright © 2015. [www.englishworksheets.com](http://www.englishworksheets.com) All rights reserved.

**a tie**

**NOTE :** Cut the cards following the lines and dots. Glue and fold over the two halves to have a solid word card. You can also have them laminated for long term use.



Copyright © 2015. [www.englishworksheets.com](http://www.englishworksheets.com) All rights reserved.

**gloves**



Copyright © 2015. [www.englishworksheets.com](http://www.englishworksheets.com) All rights reserved.

**mittens**



Copyright © 2015. [www.englishworksheets.com](http://www.englishworksheets.com) All rights reserved.

**a watch**



Copyright © 2015. [www.englishworksheets.com](http://www.englishworksheets.com) All rights reserved.

**a swimsuit**

**NOTE :** Cut the cards following the lines and dots. Glue and fold over the two halves to have a solid word card. You can also have them laminated for long term use.