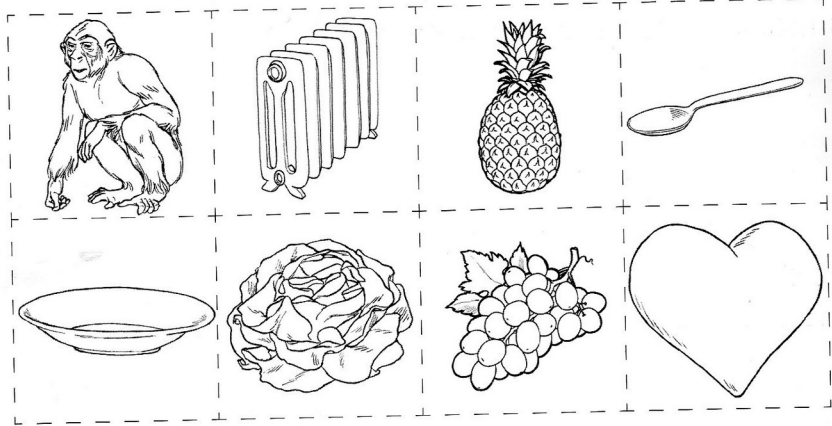
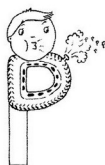
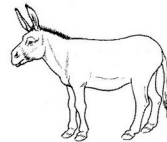
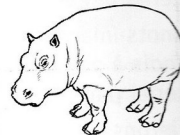
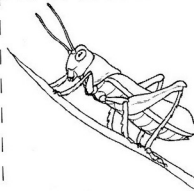
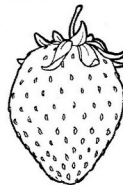
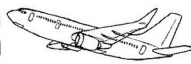
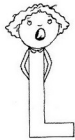
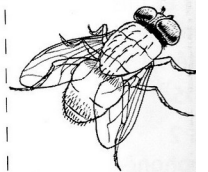
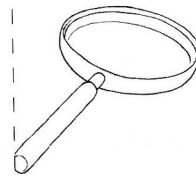


Pour le niveau 1, ne donner que 2 maisons. Y coller les phonèmes stylisés S [s] et R [r]. Donner les 8 mots-images correspondants.
 Pour les niveaux 2 et 3, donner 4 maisons. Y coller les phonèmes stylisés : Z [z], M [m], V [v] et L [l] pour le niveau 2 et S [s], F [f], N [n] et P [p] pour le niveau 3.
 Donner les 10 ou 12 mots-images correspondants.



singe - radiateur - ananas - cuillère
 assiette - salade - raisin - cœur



glace - phoque - âne - loupe
 caleçon - reine - pomme - singe
 carafe - baleine - tapis - noix