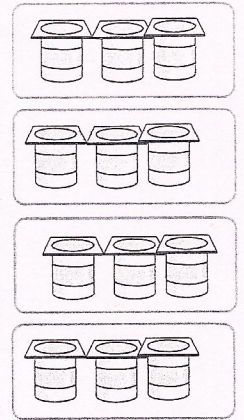
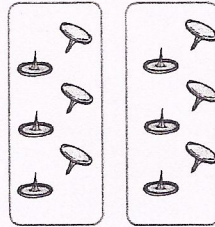
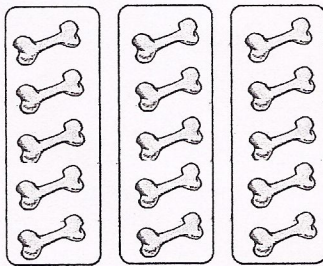
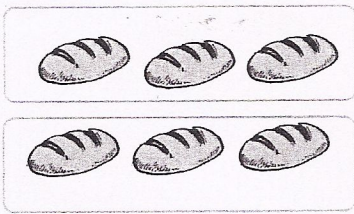
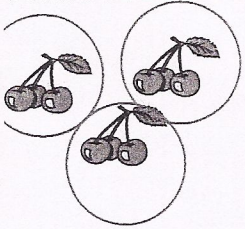


Relier l'addition répétée au bon dessin (à la règle)



$5+5+5$

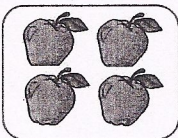
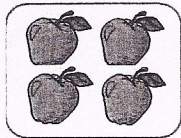
$3+3+3$

$6+6$

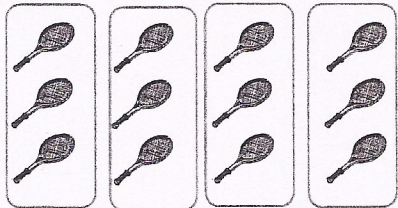
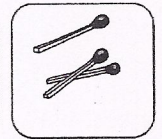
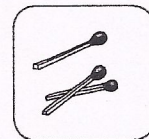
$3+3$

$3+3+3+3$

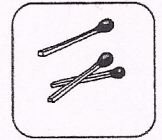
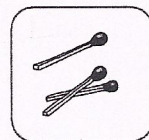
Écrire l'addition répétée par rapport au dessin, puis la multiplication.



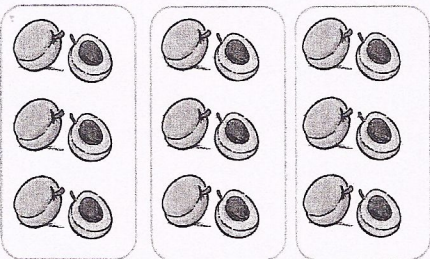
$\underline{\hspace{2cm}} = \underline{\hspace{1cm}} \times \underline{\hspace{1cm}}$



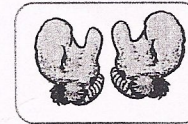
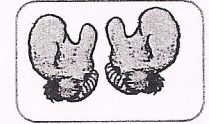
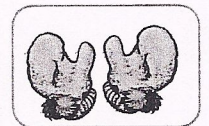
$\underline{\hspace{2cm}} = \underline{\hspace{1cm}} \times \underline{\hspace{1cm}}$



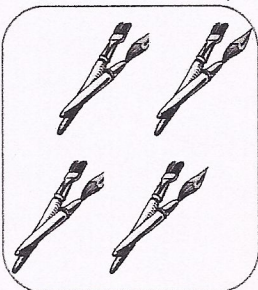
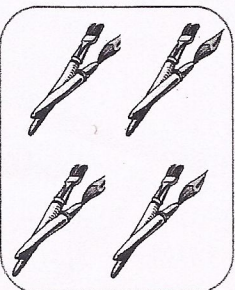
$\underline{\hspace{2cm}} = \underline{\hspace{1cm}} \times \underline{\hspace{1cm}}$



$\underline{\hspace{2cm}} = \underline{\hspace{1cm}} \times \underline{\hspace{1cm}}$



$\underline{\hspace{2cm}} = \underline{\hspace{1cm}} \times \underline{\hspace{1cm}}$



$\underline{\hspace{2cm}} = \underline{\hspace{1cm}} \times \underline{\hspace{1cm}}$